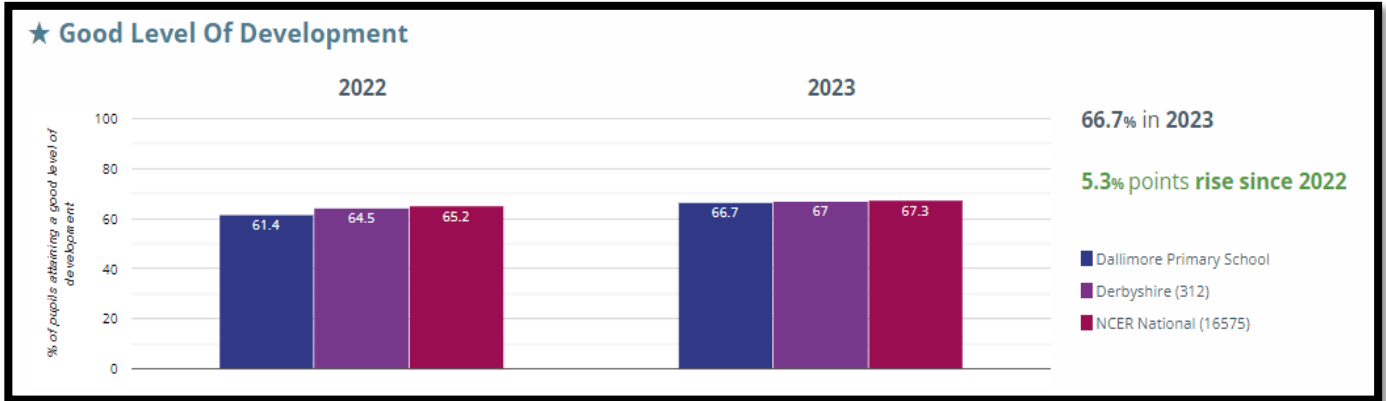




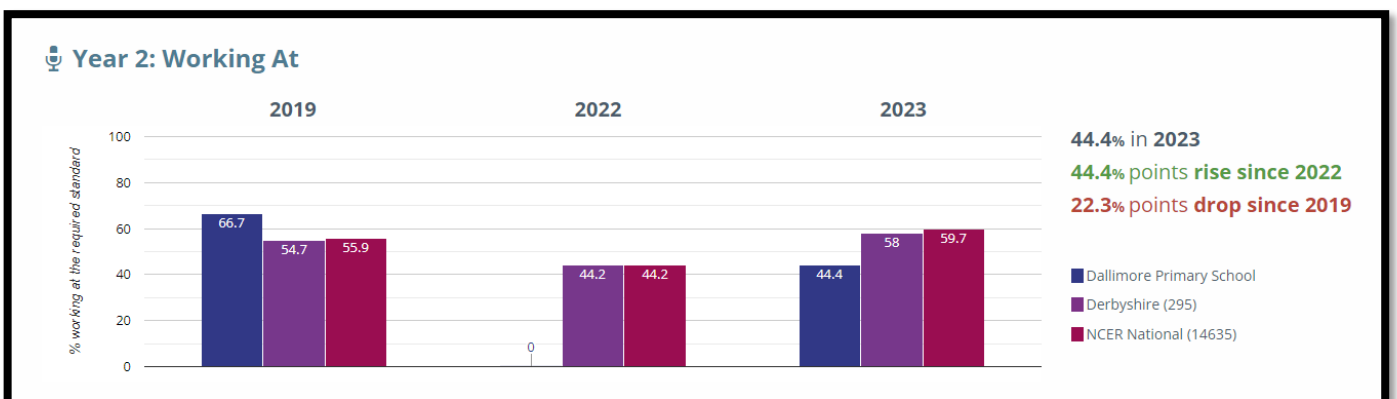
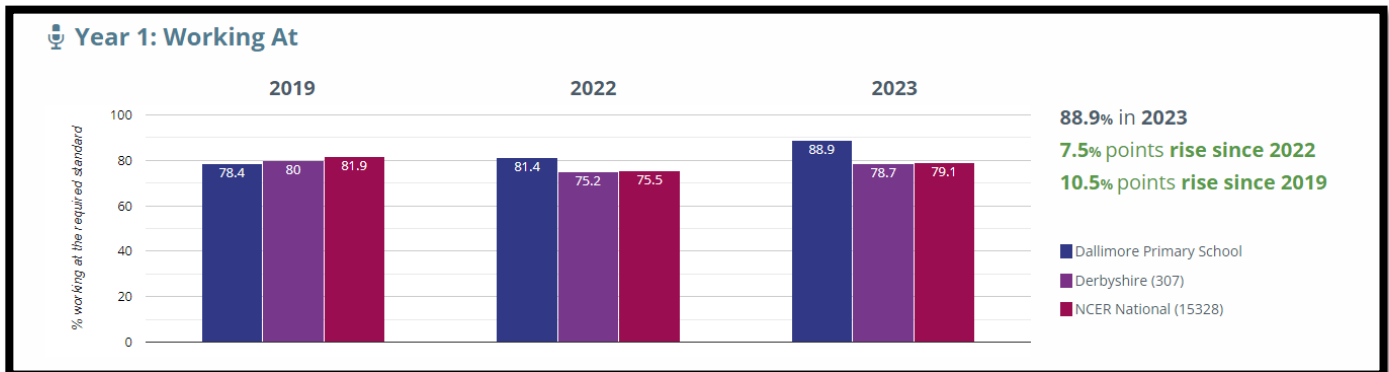
Dallimore Primary and Nursery School

Data outcomes July 23

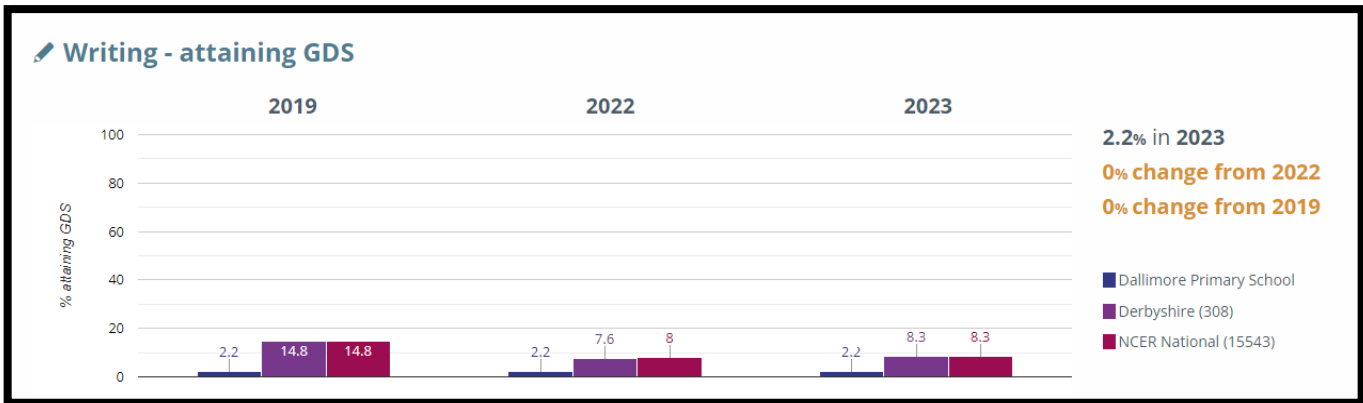
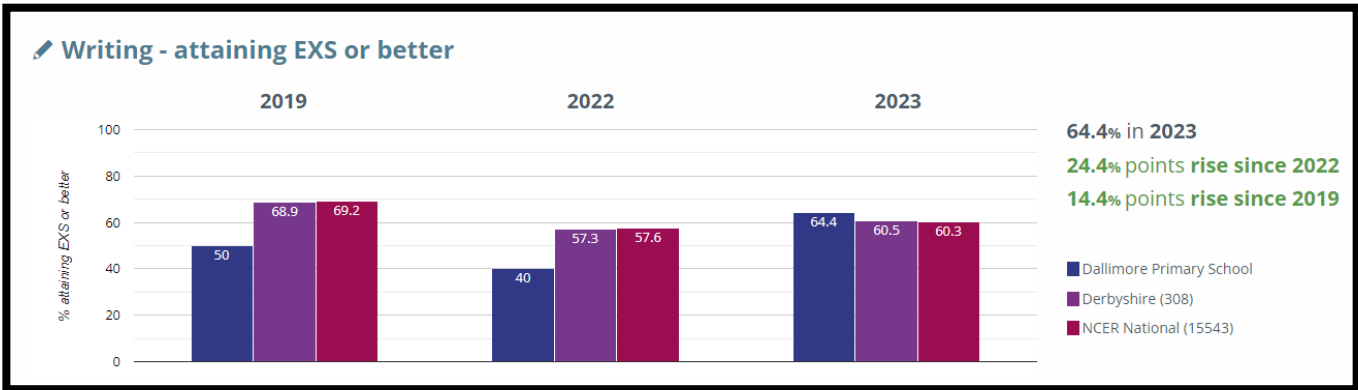
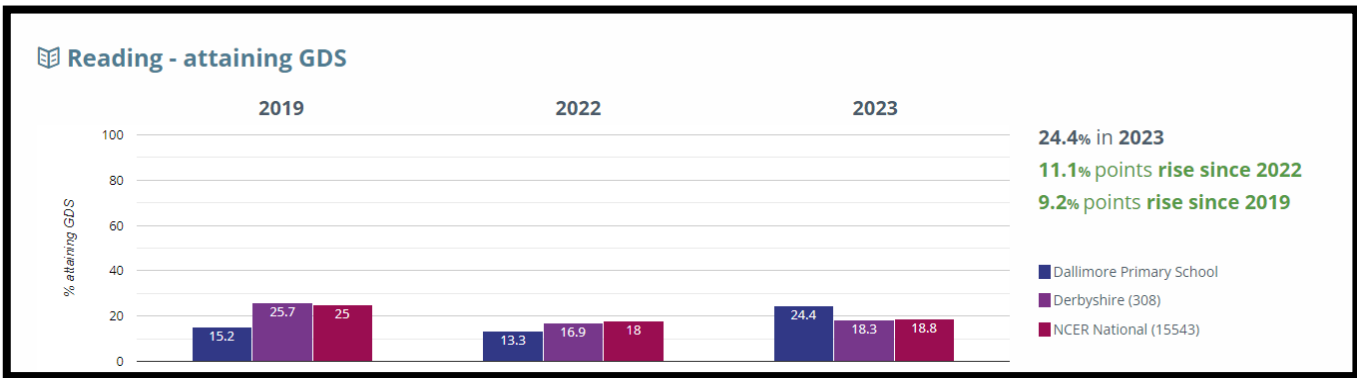
EYFS: % of pupils reaching a Good Level of Development



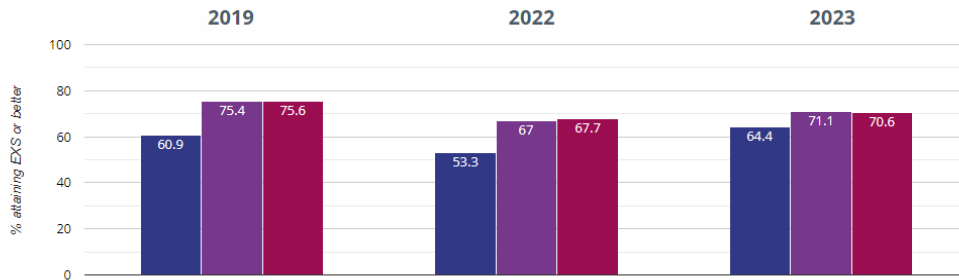
Phonics: % of pupils reaching the required standard at the end of year 1



KSI outcomes: % of pupils reaching the required standard at the end of year 2



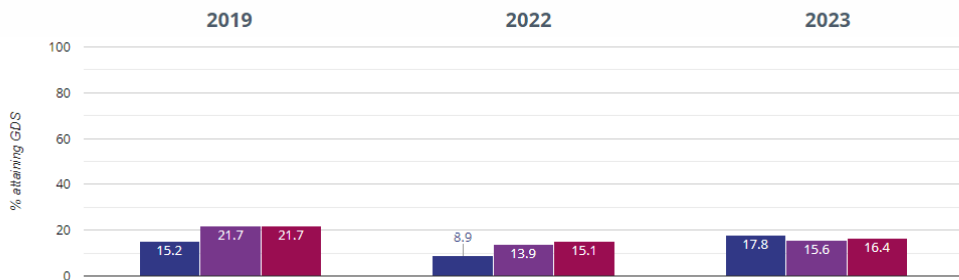
⊕ Maths - attaining EXS or better



64.4% in 2023
11.1% points rise since 2022
3.5% points rise since 2019

■ Dallimore Primary School
 ■ Derbyshire (308)
 ■ NCER National (15543)

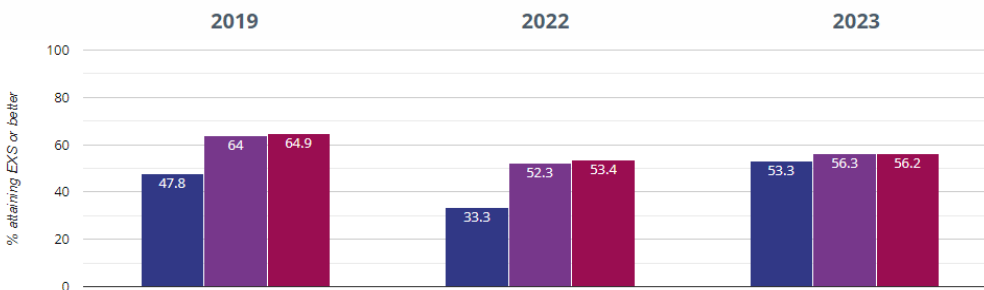
⊕ Maths - attaining GDS



17.8% in 2023
8.9% points rise since 2022
2.6% points rise since 2019

■ Dallimore Primary School
 ■ Derbyshire (308)
 ■ NCER National (15543)

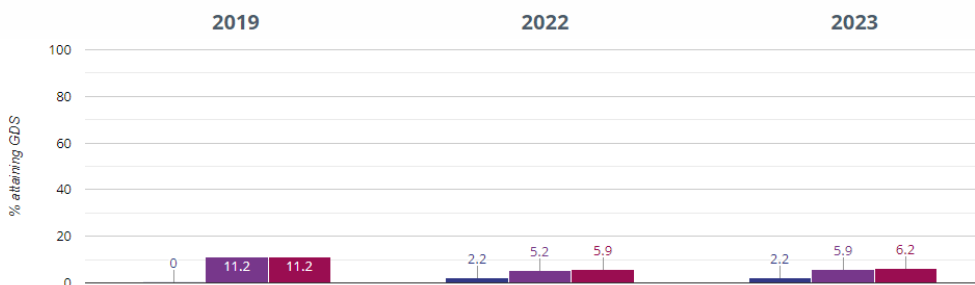
🚲 RWM - attaining EXS or better



53.3% in 2023
20% points rise since 2022
5.5% points rise since 2019

■ Dallimore Primary School
 ■ Derbyshire (308)
 ■ NCER National (15543)

🚲 RWM - attaining GDS



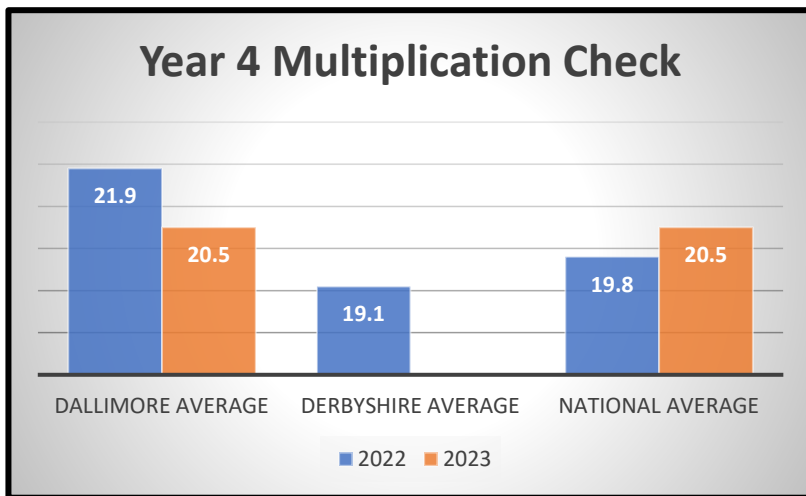
2.2% in 2023
0% change from 2022
2.2% points rise since 2019

■ Dallimore Primary School
 ■ Derbyshire (308)
 ■ NCER National (15543)

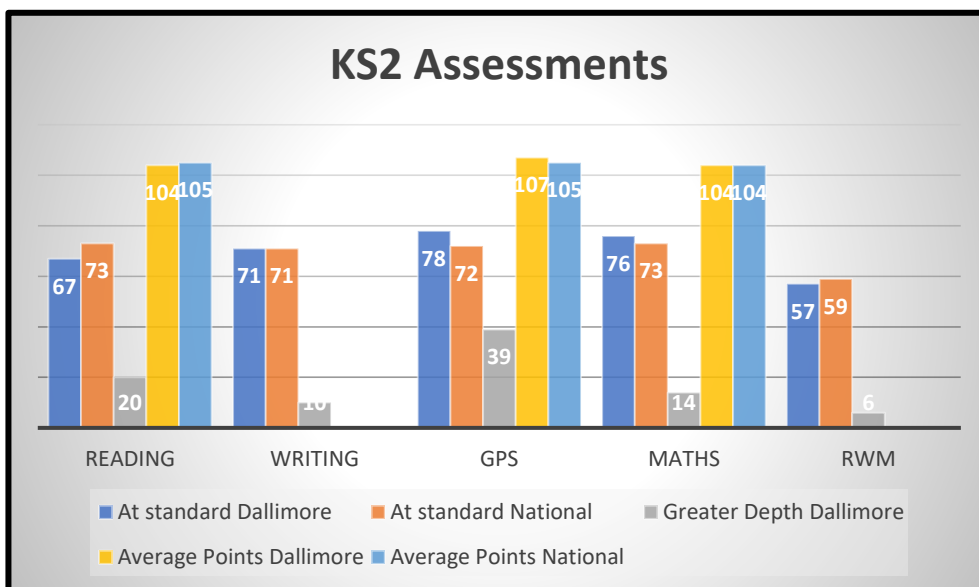
Multiplication Check: Year 4

There are 43 children in year 4. There were 25 questions

33% scored 25

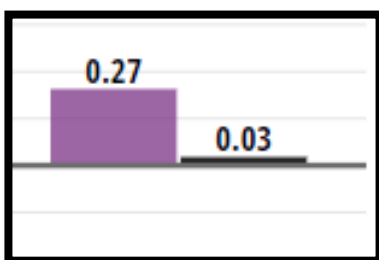


KS2 outcomes: % of pupils reaching the required standard at the end of year 6

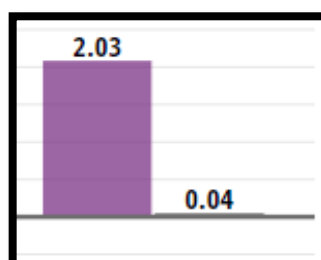


Progress measures

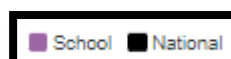
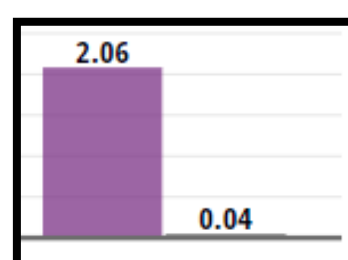
Reading



Writing



Maths



Summary

	National % at standard	Dallimore % at standard	Dallimore % at greater depth	National average point score	Dallimore average point score	Progress measure	Dallimore Progress
Reading	73%	67%	20%	105	104	0.27	0.03
Writing	71%	71%	10%	N/A	N/A	2.03	0.04
SPAG	78%	72%	39%	105	107		
Maths	76%	73%	14%	104	104	2.06	0.04
WRM Combined	57%	59%	6%	N/A	N/A		